



FOOT PROTECTION

Contact Us

SHANGHAI ZIMAI SAFETY TECHNOLOGY CO., LTD.

Add: No.29, Lane 1500 Xinfai Road, Songjiang 201611, Shanghai, China

Tel No.: +86 21 6776 6378

E-mail: Sales@zmsafety.cn

Website: www.zmsafety.cn



上海孜迈防护科技有限公司
SHANGHAI ZIMAI SAFETY TECHNOLOGY CO., LTD.

ABOUT US

ZIMAI, as a manufacturer and supplier of Personal Protective Equipment since its founding in Shanghai, China, has now expanded its product ranges to the field of Health, Security, Emergency Response, Environmental Protection, Ergonomics, Hazard Controls and Home & Community.

Being a professional supplier of PPE, ZIMAI provides one-stop purchase services to all the customers for products ranging from head protection to foot protection, with good quality and in time delivery. In the meantime, ZIMAI dedicates its effort in product certifications, which leads the result that most products of working gloves, safety shoes, masks and Hi-Vi workwears are CE certified. And for other range of PPE, ZIMAI shares tests & certifi- cates with strategic suppliers in China.

ZIMAI values customers the most, and takes quality as the priority. A Quality Management System has

already been established to provide a framework for measuring and improving the company's performance. The company has been certified to ISO 9001:2015 and ISO 14001:2015, and some of our plants also have been audited in accordance with SEDEX and BSCI, which provides our customers the security for products quality and traceability.

Based on years of experience in PPE field and the strong ability in supply chain, ZIMAI starts to introduce the new product ranges such as medical devices and other Health & Engineering related safety equipments to the market.

ZIMAI will always be committed to the field of life safety and safety protection!

ZIMAI Safety, Your first choice!

Your safety, Our success!

EN Standard for the safety footwear & occupational footwear

1.Safety footwear

What is EN ISO 20345?

The full name of the EN ISO 20345 specification is EN ISO 20345:2022 Personal Protective Equipment – Safety Footwear which is the standard all styles of “safety footwear” are tested against. It was formerly referred to as EN345, but this was replaced by EN ISO 20345:2004. EN ISO 20345:2007, EN ISO 20345:2011 was the next revision, followed by EN ISO 20345:2022, which is the current version of this standard.

The standard EN ISO 20345 defines both the basic and additional requirements for safety shoes for commercial use. Footwear in accordance with EN ISO 20345 is intended to protect the wearer from bumps, crushing, falling or rolling objects, from walking into sharp or pointed objects, heat or cold, and hot substances.

The basic requirements described in EN ISO 20345 include:

- * height of the upper
- * heel area on boots
- * minimum length, pressure and bump impact resistance of the toe cap
- * water vapour permeability and water vapour number of the upper
- * outsole thickness and abrasion resistance of the outsole.

EN ISO 20345:2022+A1:2024

All safety footwear has Toe Protection providing 200 joules of impact protection (falling objects) and 15,000 newtons of compression protection (crushing).

SB – Any product that is classified as SB only has a protective toecap.

Slip Resistance

All safety footwear certified to EN ISO 20345:2022 is tested to a mandatory basic level of slip resistance. The test uses ceramic tiles with Sodium Lauryl Sulphate (soap) and tests forepart and heel slip.

An additional claim for outsoles that perform to a higher level of slip resistance can be made and an SR symbol can be used. The additional SR level test uses ceramic tiles with Glycerol and tests forepart and heel slip.

	Class	Protective toecap (200 Joules)	Mandatroy slip resistance	Full enclosed heel	A Electrical resistance	E Energy absorption under the heel	Puncture protection			PS Non- metal insert 3.0mm test nail	WPA Water penetration and absorption of upper	Cleated outsole	WR Whole shoe water-resistant
		P Metal insert					PL						
							Non-metal insert 4.5mm test nail						
NEW	SB	✓	✓										
	S1	✓	✓	✓	✓	✓							
	S1P	✓	✓	✓	✓	✓	✓						
	S1PL	✓	✓	✓	✓	✓		✓					
	S1PS	✓	✓	✓	✓	✓			✓				
NEW	S2	✓	✓	✓	✓	✓				✓			
	S3	✓	✓	✓	✓	✓	✓			✓		✓	
	S3L	✓	✓	✓	✓	✓		✓		✓		✓	
NEW	S3S	✓	✓	✓	✓	✓			✓	✓		✓	
	S4	✓	✓	✓	✓	✓							
	S5	✓	✓	✓	✓	✓	✓					✓	
NEW	S5L	✓	✓	✓	✓	✓		✓				✓	
	S5S	✓	✓	✓	✓	✓			✓			✓	
	S6	✓	✓	✓	✓	✓				✓			✓
	S7	✓	✓	✓	✓	✓	✓			✓		✓	✓
	S7L	✓	✓	✓	✓	✓		✓		✓		✓	✓
	S7S	✓	✓	✓	✓	✓			✓	✓		✓	✓

Note: S1, S2, S3, S6 and S7 shoes are made from leather and other materials (class 1). S4 and S5 shoes are all-rubber or all-polymeric (class 2). SB shoes – which allow for an open heel – can be either class 1 or class 2



EN ISO 20345:2022+A1:2024 Additional Classifications

Symbol	
A	Antistatic between 0.1 and 1000MΩ.
AN	Protection from impact in the ankle area.
C	Partially conductive Electrical Resistance ≤100Ω
CI	Insulation of outsole against cold: 30mins at -17°C with loss of heat at ≤10°C.
E	Energy Absorption of the seat region. Energy to be absorbed to be ≥20j.
FO	Fuel oil resistance – this now optional. Resistance of the outsole to hydrocarbon-based oils, petrol etc.
HI –	Insulation of outsole against heat: 30mins at 150°C with increase in temperature no higher than 22°C.
HRO	Resistance of the outsole to brief direct contact with heat up to 300°C.
LG	A ladder grip on the outsole that meets specific dimensional requirements.
M	Protection in the metatarsal area against up to 100 joules impact energy.
SC	A scuff cap with abrasion resistance in the toe area to protect from scrapes and bumps.
WR	No water detected inside the footwear after a minimum of 80mins.
WPA	The breathability of the upper materials.

2. Occupational footwear

What is EN ISO 20347?

EN ISO 20347:2022 is a European standard that specifies the performance requirements for occupational footwear used in various work environments. This standard ensures that work shoes, boots, and other types of footwear provide adequate protection, comfort, and durability for employees exposed to workplace hazards, such as slips, impacts, or extreme temperatures. The 2022 revision of the standard introduces updates to improve the protection and comfort of footwear, while continuing to meet the needs of industries like construction, healthcare, manufacturing, and logistics.

Under the standard, EN ISO 20347-certified footwear is expected to have:

- * An antistatic, fully enclosed and energy-absorbing heel
- * Water absorption and penetration resistance
- * A cleated sole
- * An outsole resistance to fuel oil

EN ISO 20347:2022+A1:2024

Unlike safety footwear and protective footwear, occupational footwear is not legally required to have safety features such as a protective toe cap or materials designed to prevent sharp objects from penetrating the footwear. For this reason, they are not designed to protect the feet from heavy compression or impact force.

Class	Norm year	Anti-Slip	Toe cap	Puncture-resistant sole	Closed heel	Fuel Resistance	Anti-static properties	Energy absorption capability in the heel area	No water penetration for a minimum of 60 minutes.	Waterproof	Profiled sole
OB		✓	x	x	open heel possible	x	x	x	x	x	x
O1		✓	x	x	✓	x	✓	✓	x	x	x
O2		✓	x	x	✓	x	✓	✓	✓	Can be fulfilled	x
O6	NEW	✓	x	x	✓	x	✓	✓	✓	✓	x
O4		✓	x	x	Rubber or plastic boots	x	✓	✓	✓	✓	x

WORKSHOP CERTIFICATES





PRODUCT CERTIFICATES

CONTENTS



Classic	P1-P7
Sport	P8-P10
Waterproof	P11-P13
ESD	P14
Flyknitting	P15-P17
Goodyear	P18-P19
Dielectric	P20
Hiking	P21-P22
Rainboot	P23-P24
Insole	P25-P26
Sock	P27-P28



PU1600

PU Injection Low Cut Safety Shoes



Black cow split leather upper
Steel toe cap, steel plate midsole, anti-static
Double density PU/PU outsole
Black buffalo leather tongue and collar
Blue polyester liner
Size available: 36-48
EN ISO 20345:2022 S1P SR

36-48 EN ISO 20345:2022 O1 SR, S1 SR, S3 SR are available



PU1602

PU Injection Safety Sandal



Black cow split leather upper
Steel toe cap, steel plate midsole, anti-static
Double density PU/PU outsole.
Size available: 36-48
EN ISO 20345:2022 S1P SR

36-48 EN ISO 20345:2022 O1 SR, S1 SR, S3 SR are available



PU1900

PU Injection High Cut Safety Shoes

Black cow split leather upper
Steel toe cap, steel plate midsole, anti-static
Double density PU/PU outsole
Black buffalo leather tongue and collar
Blue polyester liner
Size available: 36-48
EN ISO 20345:2022 S1P SR

36-48 EN ISO 20345:2022 O1 SR, S1 SR, S3 SR are available



PU1605

PU Injection Low Cut Safety Shoes

Grey cow suede leather upper
Steel toe cap, steel plate midsole, anti-static
Double density PU/PU outsole
Grey synthetic PU tongue.
Size available: 36-48
EN ISO 20345:2022 S1P SR

36-48 EN ISO 20345:2022 O1 SR, S1 SR, S3 SR are available



PU1929

PU Injection High Cut Safety Shoes

Black cow split leather upper
Steel toe cap, steel plate midsole, anti-static
Double density PU/PU outsole
Black buffalo leather tongue and collar
Yellow polyester liner
Size available: 36-48
EN ISO 20345:2022 S3 SR

36-48 EN ISO 20345:2022 O1 SR, S1 SR, S1P SR are available



PU1918

PU Injection High Cut Safety Shoes

Grey cow split suede leather upper
Steel toe cap, steel plate midsole, anti-static
Double density PU/PU outsole
Black synthetic PU tongue.
Size available: 36-48
EN ISO 20345:2022 S1P SR

36-48 EN ISO 20345:2022 O1 SR, S1 SR, S3 SR are available



PU1618

PU Injection Low Cut Safety Shoes



Grey cow split suede leather upper
Steel toe cap, steel plate midsole, anti-static
Double density PU/PU outsole
Black synthetic PU tongue.
Size available: 36-48
EN ISO 20345:2022 S1P SR

36-48

EN ISO 20345:2022 O1 SR, S1 SR, S3 SR are available



PU1904

PU Injection High Cut Safety Shoes



White microfiber upper
Steel toe cap, anti-static
Double density PU/PU outsole.
Size: 36-48
EN ISO 20347:2022 S2 SR

36-48

EN ISO 20345:2022 O1 SR, S1 SR are available



PU1627

PU Injection low cut safety shoes

Blue cow split suede leather upper
Steel toe cap, steel plate midsole, anti-static
Double density PU/PU outsole
Black synthetic PU tongue.
Size available: 36-48
EN ISO 20345:2022 S1P SR

36-48

EN ISO 20345:2022 O1 SR, S1 SR are available



PU1606

PU Injection Low Cut Safety Shoes

White microfiber upper
Steel toe cap, anti-static
Double density PU/PU outsole.
Size: 36-48
EN ISO 20347:2022 S2 SR

36-48

EN ISO 20345:2022 O1 SR, S1 SR are available



PU1917

PU Injection high cut safety shoes

Blue cow split suede leather upper
Steel toe cap, steel plate midsole, anti-static
Double density PU/PU outsole
Black synthetic PU tongue.
Size available: 36-48
EN ISO 20345:2022 S1P SR

36-48

EN ISO 20345:2022 O1 SR, S1 SR are available



PU1607

PU Injection Occupational Slipper

White microfiber upper
Anti-static
Double density PU/PU outsole.
Size: 36-48
EN ISO 20347:2022 OB A E SR

36-48

EN ISO 20345:2022 O1 SR, S1 SR are available



PU1608

PU Injection Safety Slipper



White microfiber upper
Steel toe cap, anti-static
Double density PU/PU outsole.
Size: 36-48
EN ISO 20347:2022 SB A E SR

36-48

EN ISO 20345:2022 O1 SR, S1 SR are available



PU1911

PU Injection High Cut Safety Shoes



Black smooth split corrected leather upper
Elastic band on both sides
Steel toe cap, steel plate midsole, anti-static
Double density PU/PU outsole
EN ISO 20345:2011 S3 SR

36-48

EN ISO 20345:2022 O1 SR, S1 SR are available



PU1800

PU Injection Safety Boots

Black cow split leather upper
Steel toe cap, steel midsole, anti-static
Double density PU/PU outsole
Size: 36-48
EN ISO 20345:2022 S1P SR

36-48

EN ISO 20345:2022 O1 SR, S1 SR are available



PU1960

PU Injection High Cut Safety Shoes

Black smooth split corrected leather upper
Elastic band on both sides
Steel toe cap, steel plate midsole, anti-static
Double density PU/PU outsole
EN ISO 20345:2011 S3 SR

EN ISO 20345:2022 O1 SR, S1 SR are available



PU1810

Winter Style PU Injection Safety High Boots

Black cow split leather upper
Steel toe cap, steel midsole, anti-static
Double density PU/PU outsole
Fur liner inside.
Size: 36-48
EN ISO 20345:2022 S1P SR

36-48

EN ISO 20345:2022 O1 SR, S1 SR are available



R3905

Rubber High Cut Welding Safety Shoes

Black cow split waterproof leather upper
Steel toe cap, steel plate midsole, anti-static
Black rubber outsole
Black synthetic PU collar
Black buffalo tongue with leather cover
Size: 36-48
EN ISO 20345:2022 S3 SR

36-48

EN ISO 20345:2022 O1 SR, S1 SR are available



MF4907

Metal Free Injection High Cut Welding Safety Shoes



Black cow split waterproof leather upper
Fiberglass toe cap, composite plate midsole, anti-static
PU/Rubber outsole
Black cow split leather cover tongue
Size: 36-49
EN ISO 20345:2012 S3S HRO SR

36-49

EN ISO 20345:2022 O1 SR, S1 SR are available



A8907

PU/Rubber Injection High Cut Safety Shoes



Black microfiber leather upper
Steel toe cap, steel plate midsole, anti-static
Oil and slip resistant PU/Rubber outsole
High abrasion performance mesh lining
Size: 36-48
EN ISO 20345:2022 S3 SR

36-48

EN ISO 20345:2022 O1 SR, S1 SR are available



MF4601

Metal Free PU Injection Low Cut Safety Shoes

Black cow split leather upper
Composite toe cap, composite midsole, anti-static
Double density PU/PU outsole
Black buffalo leather tongue and collar
Size: 36-48
EN ISO 20345:2022 S1 PL SR

35-48

EN ISO 20345:2022 O1 SR, S1 SR are available



PR5610

PU/Rubber Injection High Cut Safety Shoes

Brown nubuck leather upper
Fiberglass toe cap, composite plate midsole, anti-static
Oil and slip resistant PU/Rubber outsole
High abrasion cow split lining
Size: 36-48
EN ISO 20345:2022 S3 SR

36-48

EN ISO 20345:2022 O1 SR, S1 SR are available



MF4902

Metal Free PU Injection High Cut Safety Shoes

Black cow split leather upper
Composite toe cap, composite midsole, anti-static
Double density PU/PU outsole
Black buffalo leather tongue and collar
Size: 36-48
EN ISO 20345:2022 S1 PL SR

36-48

EN ISO 20345:2022 O1 SR, S1 SR are available



PR5910

PU/Rubber Injection High Cut Safety Shoes

Brown grain crazy leather upper
Fiberglass toe cap, composite plate midsole, anti-static
Oil and slip resistant PU/Rubber outsole
High abrasion cow split lining
Size: 36-48
EN ISO 20345:2022 S3 SR

36-48

EN ISO 20345:2022 O1 SR, S1 SR are available



PR5650

PU/Rubber Injection Low Cut Safety Shoes



Brown grain nubuck leather upper
Fiberglass toe cap, composite plate midsole, anti-static
Oil and slip resistant PU/Rubber outsole
High abrasion mesh lining
Size: 36-48
EN ISO 20345:2022 S1P SR

36-48

EN ISO 20345:2022 O1 SR, S1 SR are available



MF4911

PU injection high cut safety shoes

Black microfiber and TPU leather upper
Fiberglass toe cap, composite plate midsole, anti-static,
PU/PU injection outsole
Size: 36-48
EN ISO 20345:2022 S1 PL SR

36-48



BOA640

BOA PU Injection Low Cut Safety Shoes

Black split nubuck leather with mesh fabric upper
Fiberglass toe cap, composite plate midsole, anti-static
Double density PU/PU injection outsole
High abrasion mesh lining
Size: 36-48
EN ISO 20345:2022 S1P SR

35-48



PR5620

PU/Rubber injection low cut safety shoes

Black nubuck leather upper
Fiberglass toe cap, composite plate midsole,
anti-static
Oil and slip resistant PU/RUBBER outsole
High abrasion mesh lining
Size: 36-48
EN ISO 20345:2022 S1P SR

36-48



BOA940

BOA PU injection high cut safety shoes

Black split nubuck leather with mesh fabric upper
Fiberglass toe cap, composite plate midsole, anti-static
Double density PU/PU injection outsole
High abrasion mesh lining
Size: 36-48
EN ISO 20345:2022 S1P SR

36-48



PR5970

PU/Rubber injection high cut safety shoes

Black nubuck leather upper
Fiberglass toe cap, composite plate midsole,
anti-static
Oil and slip resistant PU/RUBBER outsole
High abrasion mesh lining
Size: 36-48
EN ISO 20345:2022 S1P SR

36-48



PU1905

Waterproof High Cut Injection Safety Shoes



Black nubuck waterproof leather upper
Steel toe cap, steel plate midsole, anti-static,
Waterproof whole lining
Double density PU/PU outsole
Size: 36-48
EN ISO 20345:2022 S3 SR

36-49 EN ISO 20345:2022 O1 SR, S1 SR are available



PU1909

Waterproof High Cut Injection Safety Shoes

Black smooth grain waterproof leather upper
Steel toe cap, steel plate midsole, anti-static,
Waterproof whole lining
Double density PU/PU outsole
Size: 36-48
EN ISO 20345:2022 S3 SR

36-48 EN ISO 20345:2022 O1 SR, S1 SR are available



PU1910

Waterproof High Cut Injection Safety Shoes

Yellow nubuck waterproof leather upper
Steel toe cap, steel plate midsole, anti-static,
Waterproof whole lining
Double density PU/PU outsole
Size: 36-48
EN ISO 20345:2022 S3 SR

36-48 EN ISO 20345:2022 O1 SR, S1 SR are available



PR5930

Waterproof High Cut Injection Safety Shoes



Black crazy horse waterproof leather upper
Steel toe cap, steel plate midsole, anti-static,
Waterproof whole lining
PU/Rubber outsole
Size: 36-48
EN ISO 20345:2022 S3 SR

36-48 EN ISO 20345:2022 O1 SR, S1 SR are available



MF4916

Waterproof High Cut Injection Safety Shoes

Black split nubuck waterproof leather upper
Steel toe cap, steel plate midsole, anti-static,
Waterproof whole lining
PU/Rubber outsole
Size: 36-48
EN 20345:2022 S3S HRO SR

36-48 EN ISO 20345:2022 O1 SR, S1 SR are available



MF4616

Waterproof Low Cut Injection Safety Shoes

Black split nubuck waterproof leather upper
Steel toe cap, steel plate midsole, anti-static,
Waterproof whole lining
PU/Rubber outsole
Size: 36-48
EN 20345:2022 S3S HRO SR

36-48 EN ISO 20345:2022 O1 SR, S1 SR are available



A8906

Waterproof High Cut Injection Safety Shoes



Black TPU fabric with crazy horse leather upper
Steel toe cap, steel plate midsole, anti-static,
Waterproof whole lining
PU/Rubber outsole
Size: 36-48
EN 20345:2022 S3 SR

36-49 EN ISO 20345:2022 O1 SR, S1 SR are available



BOA950

BOA Waterproof High Cut Injection Safety Shoes

Black split nubuck waterproof leather upper
Fiberglass toe cap, composite plate midsole, anti-static,
Waterproof whole lining
PU/Rubber outsole
Size: 36-48
EN 20345:2022 S3 SR

36-48 EN ISO 20345:2022 O1 SR, S1 SR are available



ESD8601

Metal Free Injection ESD Low Cut Safety Shoes



Dark blue cow split suede leather upper
Fiberglass toe cap, composite midsole, ESD
Double density PU/PU outsole
Grey leather and green oxford nylon tongue and collar.
Size: 36-48
EN ISO 20345:2022 S1 PL SR ESD

36-48 EN ISO 20345:2022 O1 SR, S1 SR are available



ESD8600

Metal Free Injection ESD Low Cut Safety Shoes

Black cow split suede leather upper
Fiberglass toe cap, composite midsole, ESD
Double density PU/PU outsole
Grey leather and green oxford nylon tongue and collar.
Size: 36-48
EN ISO 20345:2022 S1 PL SR ESD

36-48 EN ISO 20345:2022 O1 SR, S1 SR are available



ESD8901

Metal Free Injection ESD High Cut Safety Shoes

Dark blue cow split suede leather upper
Fiberglass toe cap, composite midsole, ESD
Double density PU/PU outsole
Grey leather and green oxford nylon tongue and collar.
Size: 36-48
EN ISO 20345:2022 S1 PL SR ESD

36-48 EN ISO 20345:2022 O1 SR, S1 SR are available



PR5960

BOA Waterproof High Cut Injection Safety Shoes

Black split nubuck waterproof leather upper
Steel toe cap, steel plate midsole, anti-static,
Waterproof whole lining
PU/Rubber outsole
Size: 36-48
EN 20345:2022 S3 SR

36-48 EN ISO 20345:2022 O1 SR, S1 SR are available



CSW8900

Chainsaw safety boot



Upper: Black crazy horse leather 1.8-2.0MM
 Steel top cap and Kevlar mid-sole
 Insole: black mesh composited with EVA slice
 Liner: black sandwich mesh;
 Outsole: PU/PU double density;
 Tongue: orange Oxford cloth, 8 layers white anti-saw material on and beside the tongue; 4 layers of anti-saw material on side and shoe body.
 EN ISO 20345 2022 S3 SR
 EN ISO 17249:2013 CLASS 1

39-47



E9606

Cemented Flyknitting Safety Shoes



Blue/yellow flyknitting upper
 Steel toe cap, steel plate midsole, anti-static,
 Rubber/EVA outsole,
 Blue mesh tongue and black lining
 Size: 36-48
 EN ISO 20345:2012 S1P SR

36-48 EN ISO 20345:2022 O1 SR, S1 SR are available



PU1613

Flyknitting PU Injection Safety Shoes

Black/ yellow flyknitting upper
 Steel toe cap, steel plate midsole, anti-static
 Double density PU/PU outsole,
 Black mesh tongue
 Lemon yellow mesh lining and flat shoe lace,
 Size: 36-48
 EN ISO 20345:2012 S1P SR

36-48 EN ISO 20345:2022 O1 SR, S1 SR are available



E9614

Cemented Flyknitting Safety Shoes

Black/grey flyknitting upper
 Steel toe cap, steel plate midsole, anti-static,
 EVA outsole,
 Black mesh tongue and black lining
 Size: 36-48
 EN ISO 20345:2012 S1P SR

36-48 EN ISO 20345:2022 O1 SR, S1 SR are available



PU1614

Flyknitting PU Injection Safety Shoes

Black/ blue flyknitting upper
 Steel toe cap, steel plate midsole, anti-static
 Double density PU/PU outsole,
 Black mesh tongue
 Blue mesh lining and flat shoe lace,
 Size: 36-48
 EN ISO 20345:2012 S1P SR

36-48 EN ISO 20345:2022 O1 SR, S1 SR are available



E9716

Flyknitting PU Injection Safety Shoes

Flyknitting with KPU upper,
 Steel toe cap, steel plate midsole, anti-static,
 Double density PU/PU injection outsole,
 Black mesh tongue and yellow lining
 Size: 36-48
 EN ISO 20345:2012 S1P SR

36-48 EN ISO 20345:2022 O1 SR, S1 SR are available



E9618

Flyknitting PU Injection Safety Shoes



Flyknitting with KPU upper,
Steel toe cap, steel plate midsole, anti-static,
Double density PU/PU injection outsole,
Black mesh tongue and yellow lining
Size: 36-48
EN ISO 20345:2012 S1P SR

36-48 EN ISO 20345:2022 O1 SR, S1 SR are available



BOA630

BOA Flyknitting PU Injection Safety Shoes

Flyknitting with KPU upper,
Steel toe cap, steel plate midsole, anti-static,
Double density PU/PU injection outsole,
Black mesh tongue and yellow lining
Size: 36-48
EN ISO 20345:2012 S1P SR

36-48 EN ISO 20345:2022 O1 SR, S1 SR are available



BOA650

BOA Flyknitting PU Injection Safety Shoes

Flyknitting with KPU upper,
Steel toe cap, steel plate midsole, anti-static,
Double density PU/PU injection outsole,
Size: 36-48
EN ISO 20345:2012 S1P SR

36-48 EN ISO 20345:2022 O1 SR, S1 SR are available



R3602

Goodyear Welted Safety Shoes



Yellow nubuck leather upper
Steel toe cap, steel midsole
Yellow nubuck leather tongue and black synthetic
PU collar
Yellow rubber outsole
Size: 36-47
EN ISO 20345:2022 SBP SR

36-47 EN ISO 20345:2022 O1 SR, S1 SR are available



R3902

Goodyear Welted Safety Boots

Yellow nubuck leather upper
Steel toe cap, steel midsole
Yellow nubuck leather tongue and black
synthetic PU collar
Yellow rubber outsole
Size: 36-47
EN ISO 20345:2022 SBP SR

36-47 EN ISO 20345:2022 O1 SR, S1 SR are available



R3903

Goodyear Welted Safety Boots

Black corrected grain leather with TPR toe cap protection
upper
Steel toe cap, steel midsole
Black synthetic PU tongue and collar
Yellow rubber outsole
Size: 36-47
EN ISO 20345:2022 SBP SR

36-47 EN ISO 20345:2022 O1 SR, S1 SR are available



R3904

Goodyear Welted Safety Boots



Brown crazy leather upper
Steel toe cap, steel midsole
Elastic band on both sides
Brown rubber outsole
Size: 36-47
EN ISO 20345:2022 SBP SR

36-47 EN ISO 20345:2022 O1 SR, S1 SR are available



R3906

Goodyear Welted Safety Boots

Brown crazy leather upper
Steel toe cap, steel midsole
Brown crazy leather tongue and black synthetic
PU leather collar
Brown rubber outsole
Size: 36-47
EN ISO 20345:2022 SBP SR

36-48 EN ISO 20345:2022 O1 SR, S1 SR are available



EI005

Electrical Insulating Safety Boots

Red brown cow grain leather upper
Non-metallic puncture resistant insole + kevlar midsole
Rubber EVA outsole
Electric insulation:6KV
Size: 35-48

35-48 Electric insulation 20KV,25KV,30KV,35KV are available



EI002

Electrical Insulating Wellington Safety Boots



Natural rubber insulation boots for live work
Material: natural rubber
Electric insulation:25KV
Size: 37-46

37-46 Electric insulation 20KV,25KV,30KV,35KV are available



EI003

Electrical Insulating Wellington Safety Boots

Natural rubber insulation boots for live work
Material: natural rubber
Electric insulation:30KV
Size:37-48

36-48 Electric insulation 20KV,25KV,30KV,35KV are available



EI004

Electrical Insulating Wellington Safety Boots

Natural rubber insulation boots for live work
Material: natural rubber
Electric insulation:35KV
Size: 37-48

37-48 Electric insulation 20KV,25KV,30KV,35KV are available



AR1640

Waterproof Hiking shoes



Cow suedue leather + Oxford upper
Lining: Mesh lining
outsole
Size: 39-46

Double PU

39-46



AR1600

Waterproof Hiking Shoes

Nubuck leather+ oxford fabric upper
Whole waterproof lining
MD outsole
Size: 39-46

39-46



AR1920

Waterproof Hiking Boots

Cow split suede leather+ oxford fabric upper
Whole waterproof lining
Size: 39-46

MD outsole

39-46



AR1930

Waterproof Hiking Boots



Cow split suede leather+ oxford fabric upper
Whole waterproof lining
Double density PU outsole
Size: 39-46

39-46



AR1960

Waterproof Hiking Boots

Camouflage oxford fabric upper
Whole waterproof lining
Double density PU outsole
Size: 39-46

39-46



AR1990

Waterproof Hiking Boots

FG oxford fabric upper
Whole waterproof lining
Double density PU outsole
Size: 39-46

39-46



PB7000

Injection PVC Safety Rain Boots

Yellow/black color PVC material
Steel toe cap, steel plate midsole
Size available: 37-47
EN ISO 20345:2011 S5 SRA

37-47



PB7300

Injection PVC Safety Rain Boots

Black color PVC material
Steel toe cap, steel plate midsole
Size available: 37-47
EN ISO 20347:2012 S5 SRA

37-47



PB7100

Injection PVC Safety Rain Boots

Green/black color PVC material
Steel toe cap, steel plate midsole
Size available: 37-47
EN ISO 20345:2011 S5 SRA

37-47



PB7500

Injection EVA Rain boots

Black EVA upper and outsole
Size available: 37-47

37-47



PB7200

Injection PVC Safety Rain Boots

White color PVC material
Steel toe cap, steel plate midsole
Size available: 37-47
EN ISO 20347:2012 S5 SRA

37-47



PB7500

Injection safety rain boots

Black PVC upper with NBR outsole
Steel toe cap, steel plate midsole
Size available: 37-47

37-47

S206

ESD Insole

Black mesh fabric with foam EVA
ESD function
Size: 35-48

35-48



S202

Coconut Insole

Brown coconut silk + natural cow split suede leather
Size: 35-48

35-48



S200

Foam EVA With Silicone Insole

Black mesh foamed EVA insole with holes,
Blue silicone on the heel
Size: 35-48

35-48



S203

EVA & Latex Insole

EVA with black mesh fabric
Blue latex (perforated) on the back,
Transparent TPR honeycomb on the heel part
Size: 35-48

35-48



S201

PU & Carbon Insole

Black PU coated black mesh fabric with carbon plate
PU+poron gasket+zoom air cushion
Size: 35-48

35-48

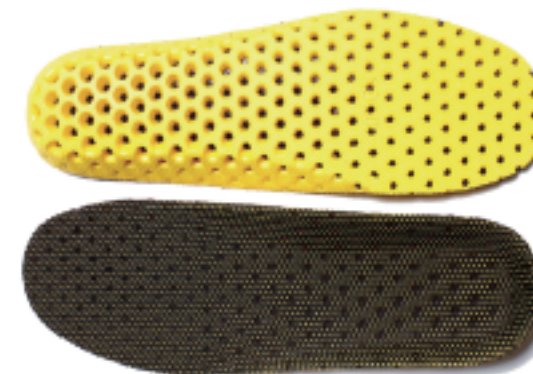


S204

EVA Breathable Insole

Breathable mesh + high elastic EVA
Size: 35 - 48

35-48





\$105

Socks with Silica gel

Material: polyester/nylon/Lycra
Silica gel on bottom
Color: various colors available
Size: 36-49
Weight: 42g

36-49





\$102

Terry Loop Socks

Material: polyester/wool/acrylic/nylon
Color: various colors available
Size: 36-49
Weight: 110g

36-49





\$100

Socks

Material: polyester/wool/acrylic/nylon
Color: various colors available
Size: 36-49
Weight: 140g

36-49



\$103

Terry Loop Socks

Material: polyester/cotton
Color: various colors available
Size: 36-49
Weight: 82g

36-49



\$101

Socks

Material: polyester/wool/acrylic/nylon
Color: various colors available
Size: 36-49
Weight: 140g

36-49



\$104

Terry Loop Socks

Material: polyester/cotton
Color: various colors available
Size: 36-49
Weight: 74g

36-49